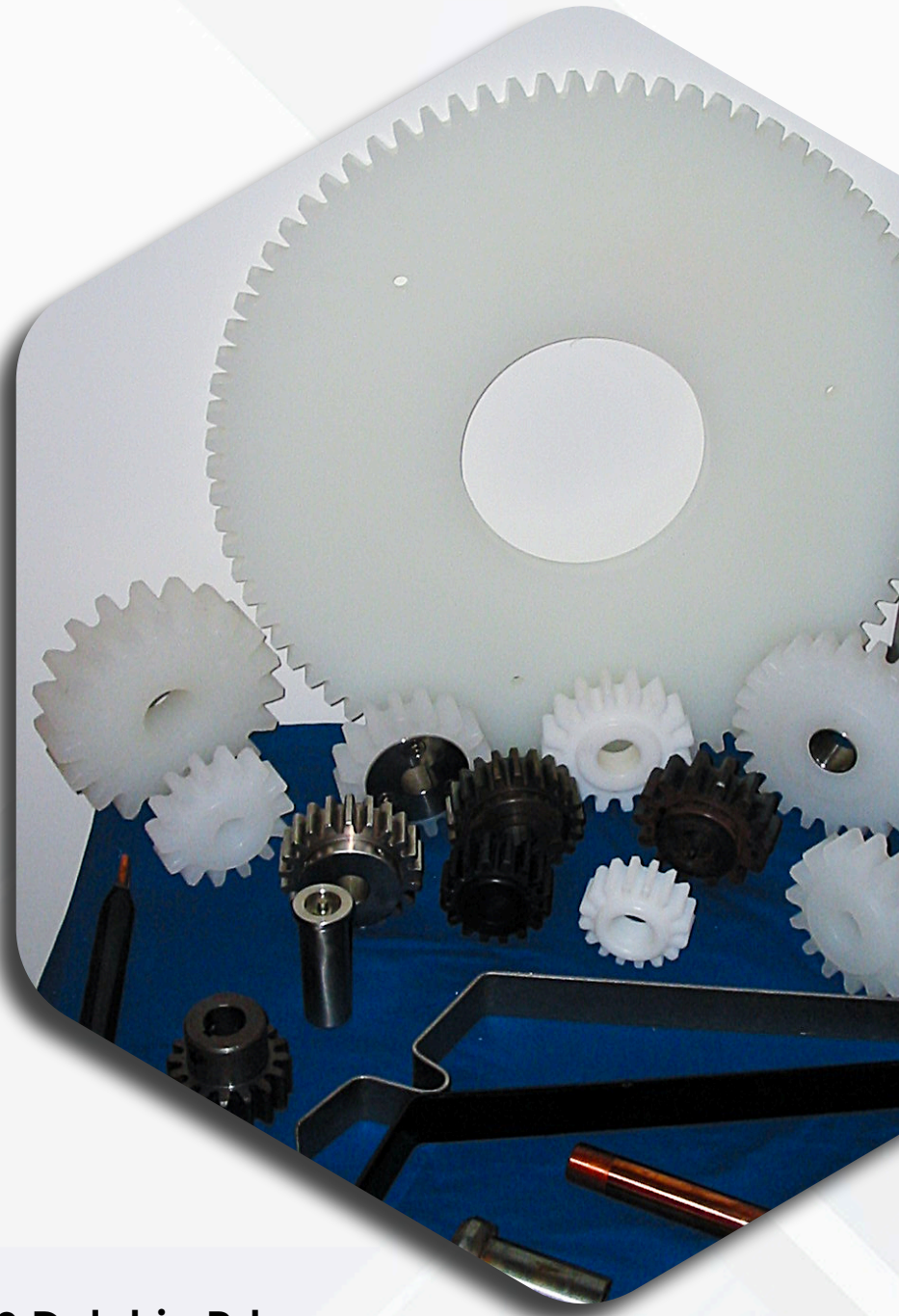


NOVO

METAL FINISHING EQUIPMENT

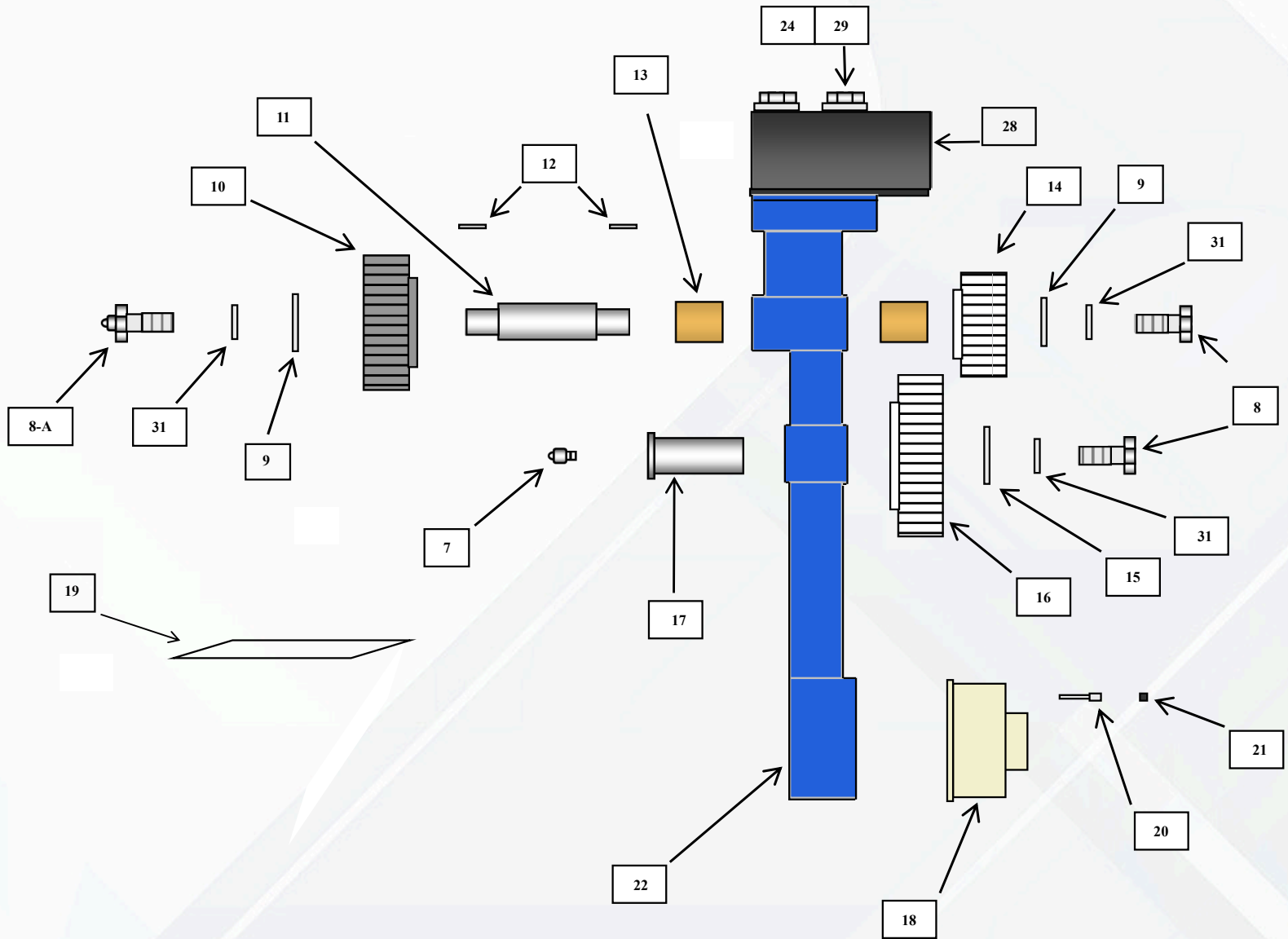


150 Dolphin Rd.
Bristol, CT 06010
860-583-0517

novometalfinishingequipment.com

The Trusted Source for Your Plating Line Needs

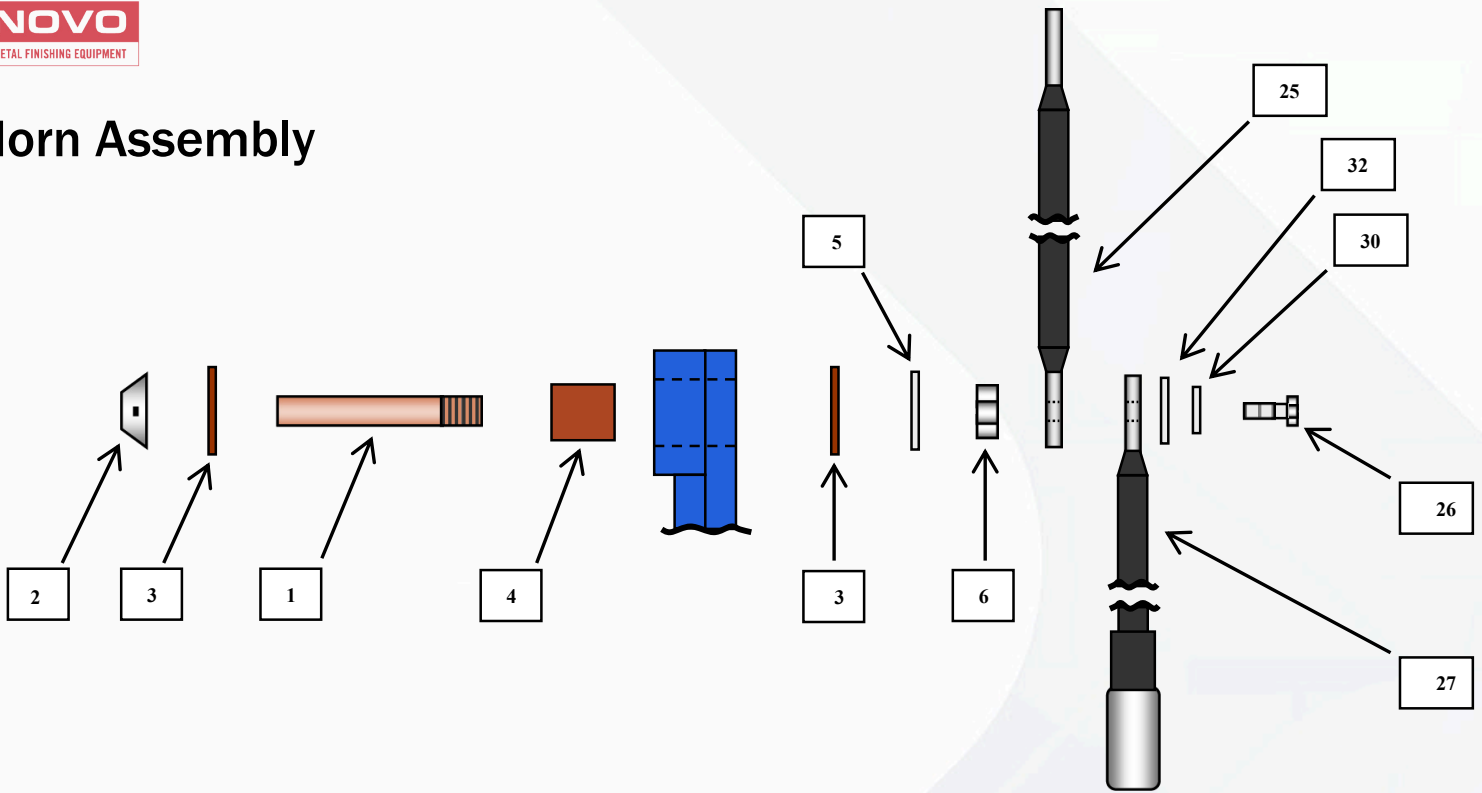
Polyglass Hanger Arm - Drive End Assembly Diagram



Hanger Arm Parts List

Item #	Part #	Description
7	NPGF-125	Grease Fitting for Idle Shaft - Plated
8	HA08-Z	Hex Bolt - Plated
8-A	HA08A-Z	Drive Shaft Bolt with Grease Fitting - Hex Head Bolt - Plated
9	HA09-Z	Drive Shaft Flat Washer-Plated
10	NP3687	Outside Drive Gear - 21T6P - Hardened Steel
11	NP3048	Drive Shaft - 6.430" Long - Steel - Greasable
12	NPK250	Drive Shaft Key
13	NP1506	Oilite Bushing (Machined to Size for Drive Shaft)
14	NP3046-A	Inside Drive Gear - 16T6P - Black UHMW
14	NP3046-ABS	Inside Drive Gear - 16T6P - Nat. ABS
14	NP3046-FS	Inside Drive Gear - 16T4P - Polypro -Fully Submerged
15	HA15-Z	Idle Gear Washer - Plated
16	NP3679-FS	Idle Gear - 24T4P - Polypropylene Construction - Fully Submerged
16	NP3679	Idle Gear - 16T6P - UHMW
17	NP3680	Idle Shaft - Hardened Steel - Machined for Grease Fitting
18	NP52473	Collar Bearing #2
19	NP52474	Teflon Sleeve #2
20	NP51618	Collar Bearing Screw- SS
21	NP3103	Collar Bearing Plug
24	HA24-Z	Hex Bolt-Plated
28	NP3173- _	T-Member
29	HA29-S	Flat Washer-Plated
31	HA31-Z	Lock Washer Plated

Horn Assembly



Save \$ when you buy the complete kit! Part Number: NP3052-A

Item #	Part #	Description
1	NP3052	Copper Horn
2	NP3106-S	Horn Guard - Machined Steel
3	NP3054-B	Horn Washer - Phenolic (x2)
4	NP3053-A	Horn Insulator Bushing - Phenolic
5	NP3054-P	Horn Washer - Plated Steel
6	NP3104-P	Horn Jam Nut - Plated Steel

Add-On Options:

25	NP3116-4	Horn Connector Cable- 4/0 Cable
26	HA26-Z	Hex Bolt-Plated
27	12850-__	Dangler 12850-__ (Enter overall length including sleeve if needed)
30	HA30-Z	Lock Washer-Plated
32	HA32-Z	Flat Washer-Plated

Stainless steel hardware option available

Polyglass Hanger Arm - Standard Depth

PART NO.	DRIVE SIDE
HA6000	Supplied with Oilite Bushings and Horn Insulator Bushings Only
HA6000-A	Complete Arm - Supplied with Copper Horns Mounted and oilite bushings & # 2 collar Bearing Mounted - 6-Pitch Gear Train
HA6000-B	Supplied with oilite bushings, Copper Horns and #2 Collar Bearing Mounted
HA6000-C	Supplied with oilite bushings, Horn Insulator Bushings and #2 Collar Bearing Mounted
HA6000-D	Supplied with Copper Horns Mounted and oilite bushings

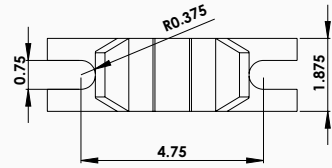
IDLE SIDE	
HA6001	Supplied with Horn Insulator Bushings only
HA6001-A	Supplied with Copper Horns and #2 Collar Bearing Mounted
HA6001-B	Supplied with Horn Insulator Bushings and #2 Collar Bearing Mounted
HA6001-C	Supplied with Copper Horns Mounted

Polyglass Hanger Arm - Fully Submerged

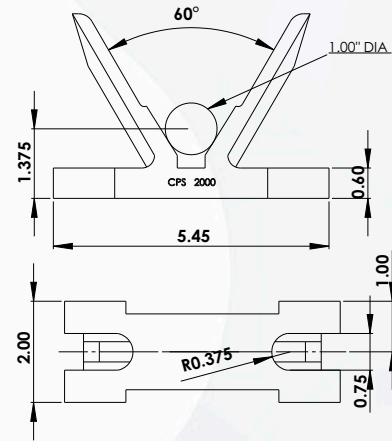
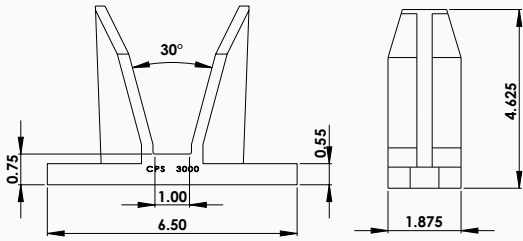
PART NO.	DRIVE SIDE
HA8000	Supplied with Oilite Bushings and Horn Insulator Bushings Only
HA8000-A	Complete Arm with Copper Horns, 4-Pitch Drive Train, and #2 Collar Bearing Mounted
HA8000-B	Supplied with Copper Horns and #2 Collar Bearing Mounted
HA8000-C	Supplied with Horn Insulator Bushings and #2 Collar Bearing Mounted
HA8000-D	Supplied with Copper Horns Mounted

IDLE SIDE	
HA8001	Supplied with Horn Insulator Bushings Only
HA8001-A	Supplied with Copper Horns and #2 Collar Bearing Mounted
HA8001-B	Supplied with Horn Insulator Bushings and #2 Collar Bearing Mounted
HA8001-C	Supplied with Copper Horns Mounted

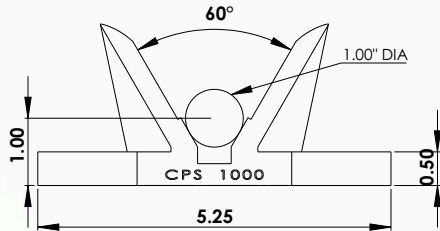
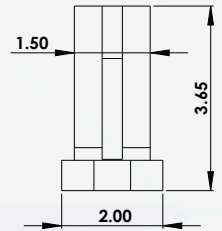
Saddles & Horn



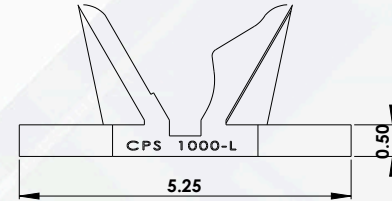
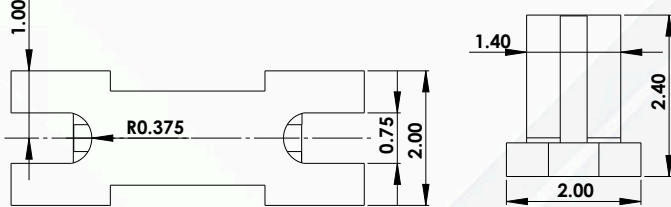
S3000



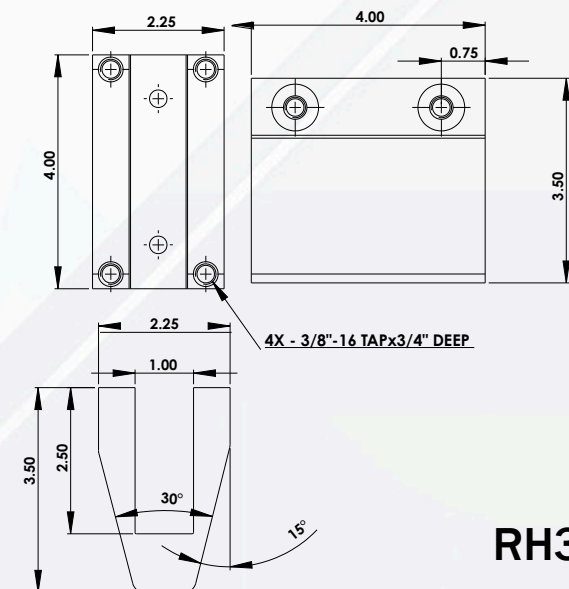
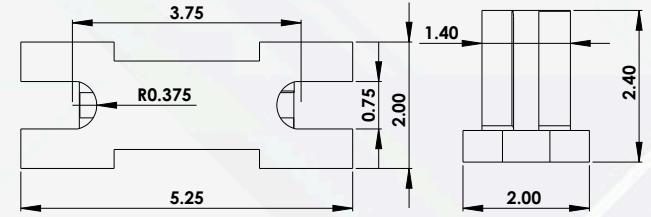
S2000



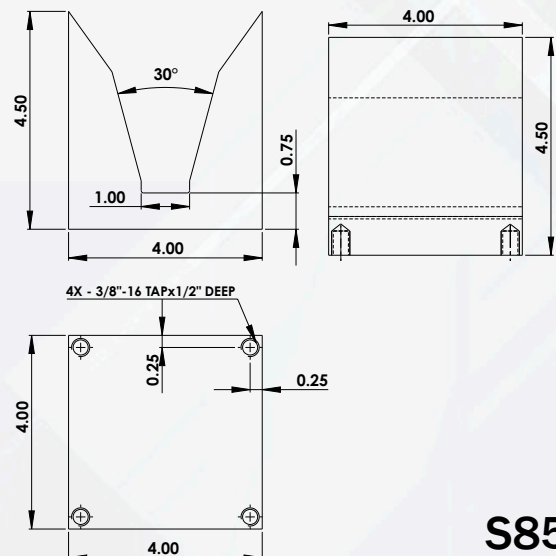
S1000



S1000-L



RH3000



S85-4

Saddles & Horn

PART NO.	BRONZE
S1000-L	Barrel Saddle - Raw Bronze Casting - Small Manual "LOCKING" Style / 1,000 Amp
S1000	Standard Barrel Saddle - Bronze 1,000 AMPS
S2000	Barrel Saddle - Bronze - Automatic Style - Machined 1,000 AMPS
S3000	Rack Saddle - Bronze - 2,000 AMPS
S85-4	Rack Saddle - Machined - 4" x 4" - Solid Bronze Construction - Drill & Tap 3/8"-16 Holes
S85-2	Rack Saddle - Machined - 2" x 4" - Solid Bronze Construction - Drill & Tap 3/8"-16 Holes

POLYGLASS & POLYPRO

S3000-P	Rack Saddle - SOLID Polypropylene Construction
S3000-PGL	Rack Saddle - Polyglass Construction
S1000-PGL	Barrel Saddle - Polyglass Construction

HORN

RH3000	Rack Horn - Bronze Construction
--------	---------------------------------

Danglers

PART NO.

12850-__	Dangler Assembly - __" Overall Length - 4/0 Cable - Dangler to be Complete With Steel Contact Ball, __" Protective Sleeve, and Copper Connecting Lug
78120-__	Dangler Assembly - __" Overall Length - #2 Cable- Portable unit (5x9 - 10x18)
71224-__	Dangler Assembly - __" Overall Length - 1/0 Cable- Portable unit (12x24) <i>*Protective sleeve is not available for this cable.*</i>

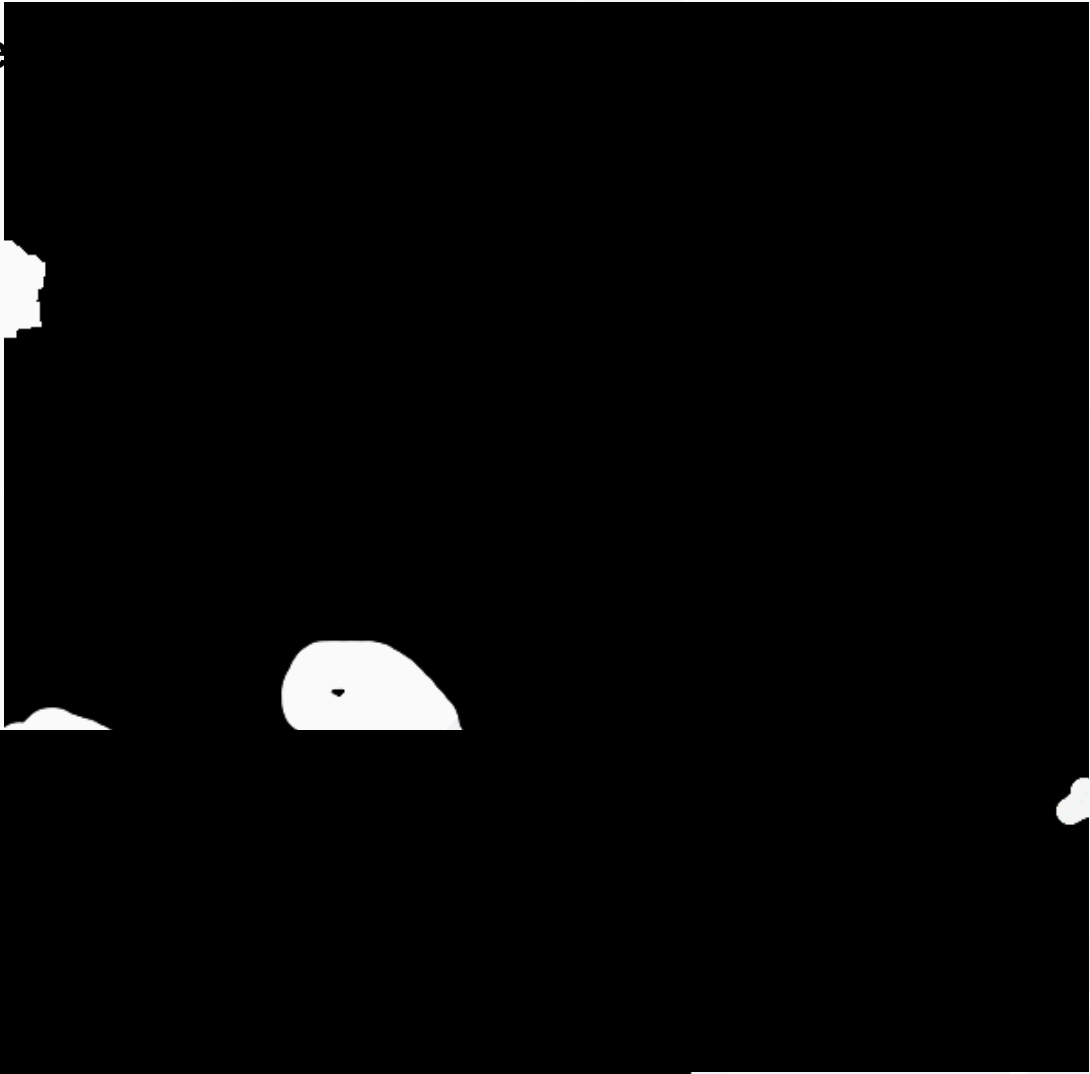
4/0 - .803" Nominal OD

1/0 - .672" Nominal OD

#2 - .509" Nominal OD



Complete Barrel Assembly Automatic Pickup



Note: If you have a larger tank, we are flexible with the “F” dimension and can provide extended horns.

Production Barrel Assembly

Polypropylene flat material or Dimpled.

We offer barrel assemblies from 12" x 24" up to 18" x 48".

Standard Package Includes:

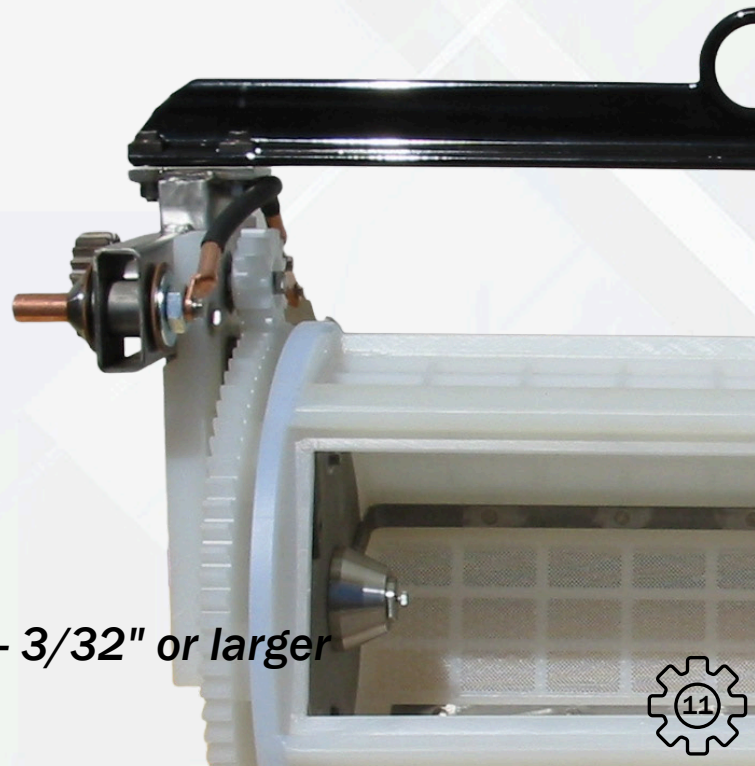
- Cylinder
- Clamps
- Ring gear
- Sleeves
- Door

Complete Package Includes:

- Superstructure
- Motorization

Available Options:

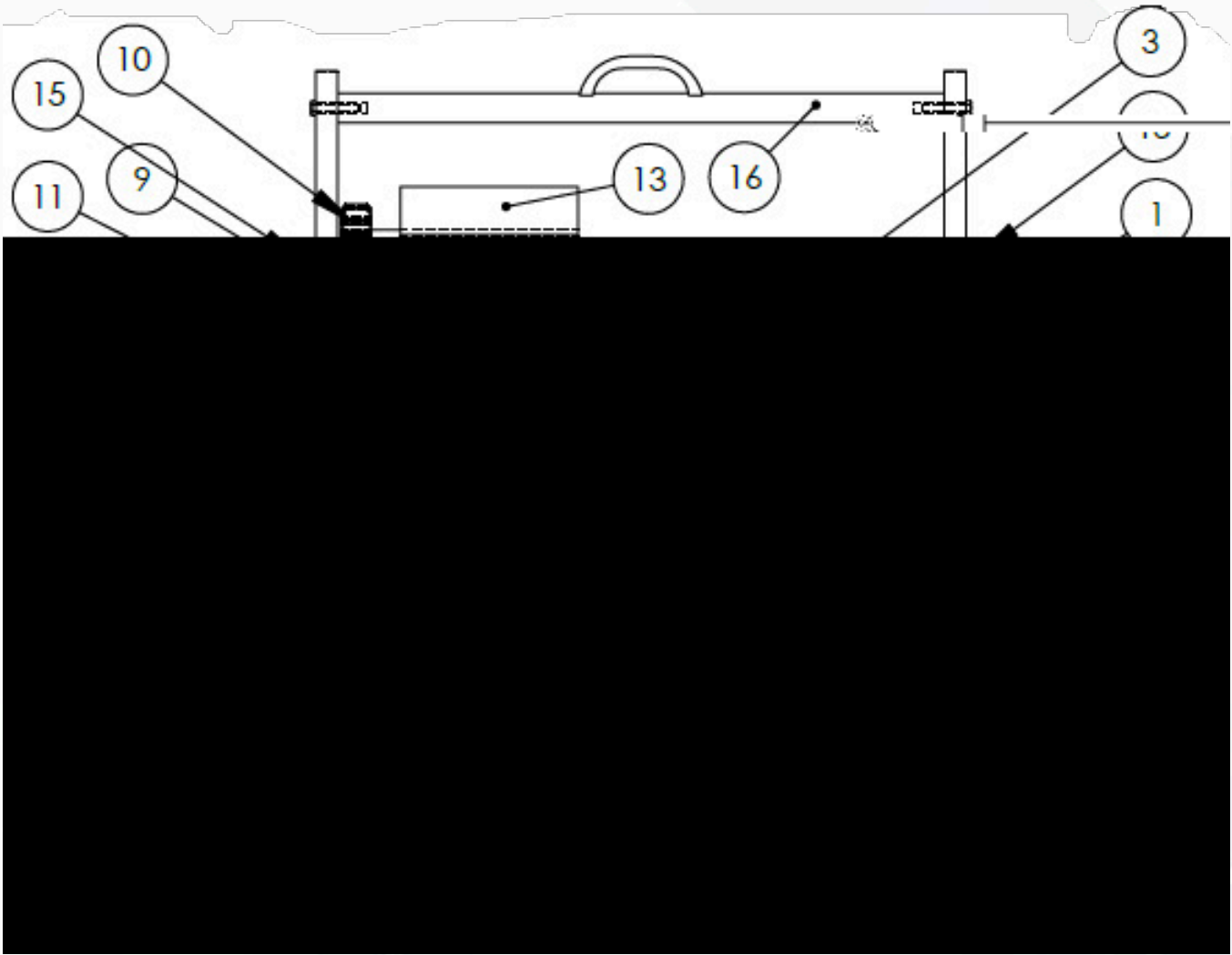
- High-performance
- Herringbone
- Cone strip
- Slide Lock covers
- Epoxy/Talisman coating on chassis
- Stainless Steel chassis



Standard perforations- 3/32" or larger

Complete Barrel Assembly

Standard Portable



1	Barrel Perforation	9	Idle gear
2	Hanger Plate	10	Drive gear
3	Motor Plate	11	Idle shaft
4	Standard Idle end hub	12	Dangler
5	Standard drive end hub	13	Gear motor
6	Standard idle end bushing	14	Barrel clamp (Not shown)
7	Standard drive end bushing	15	Copper buss bar
8	Ring gear	16	Lift rod

Portable Barrel Assembly

Polypropylene flat material or Dimpled.

We offer barrel assemblies from 5" x 9" up to 12" x 24".

Standard Package Includes:

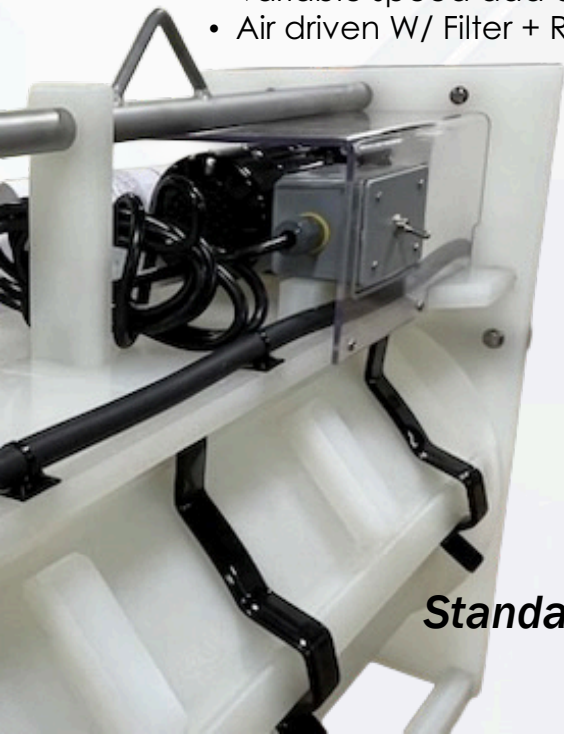
- Cylinder
- Clamps
- Ring gear
- Door

Full Assembly Standard +:

- Danglers
- Copper buss bars
- Hanger plates
- Lift bar
- Motorization

Available Options:

- Variable speed add on
- Air driven W/ Filter + Reg



Standard perforations- 3/32" or larger

Clamps

PART NO.		Portable
CLP-P06-U	6" Standard Portable Clamp - 1" wide - Titanium Construction - Uncoated	
CLP-P06-C	6" Standard Portable Clamp - 1" Wide - Titanium Construction - Coated	
CLP-P08-U	8" Standard Portable Clamp -1" Wide- Titanium Construction Uncoated	
CLP-P08-C	8" Standard Portable Clamp -1" Wide- Titanium Construction - Coated	
CLP-P10-U	10" Standard Portable Clamp - 1" Wide Titanium Construction - Uncoated	
CLP-P10-C	10" Standard Portable Clamp - 1" Wide Titanium Construction - Coated	
CLP-P12-U	12" Standard Portable Clamp - 1" Wide Titanium Construction - Uncoated	
CLP-P12-C	12" Standard Portable Clamp - 1" Wide Titanium Construction - Coated	
Production		
CLP-12-U	12" Production Clamp - 1-1/2" Wide - Titanium Construction - Uncoated	
CLP-12-C	12" Production Clamp - 1-1/2" Wide - Titanium Construction - Coated	
CLP-14-U	14" Production Clamp - 1-1/2" Wide - Titanium Construction - Uncoated	
CLP-14-C	14" Production Clamp - 1-1/2" Wide - Titanium Construction - Coated	
CLP-16-U	16" Production Clamp - 1-1/2" Wide - Titanium Construction - Uncoated	
CLP-16-C	16" Production Clamp - 1-1/2" Wide - Titanium Construction - Coated	
CLP-18-U	18" Production Clamp - 1-1/2" Wide - Titanium Construction - Uncoated	
CLP-18-C	18" Production Clamp - 1-1/2" Wide - Titanium Construction - Coated	

Cone Contacts

PART NO.

Cone Disc

NP3093-SS-201	Stainless Steel Disc - 8.0 O.D - 3.5 I.D
NP3093-SS-301	Stainless Steel Disc - 13.25 O.D - 3.5 I.D
NP3093-SS-401	Stainless Steel Disc - 15.25 O.D - 3.5 I.D

Cathode Arm

NP3087-SD	Copper Cathode Arm - Standard Depth - Left Hand - Plastisol Coated (Cut Length 21 1/2" Lg.)
NP3088-SD	Copper Cathode Arm - Standard Depth - Right Hand - Plastisol Coated (Cut Length 21 1/2" Lg.)
NP3087-FS	Copper Cathode Arm - Fully Submerged Depth - Left Hand - Plastisol Coated (Cut Length 24 1/2" Lg.)
NP3088-FS	Copper Cathode Arm - Fully Submerged Depth - Right Hand - Plastisol Coated (Cut Length 24 1/2" Lg.)

Cathode Nut

NP3090-L	Stainless Steel Cathode Nut - Left Hand Include 3/8-16 X 1-1/4 Long SS Bolt & 3/8-16 SS Nut
NP3090-R	Stainless Steel Cathode Nut - Right Hand Include 3/8-16 X 1-1/4 Long SS Bolt & 3/8-16 SS Nut